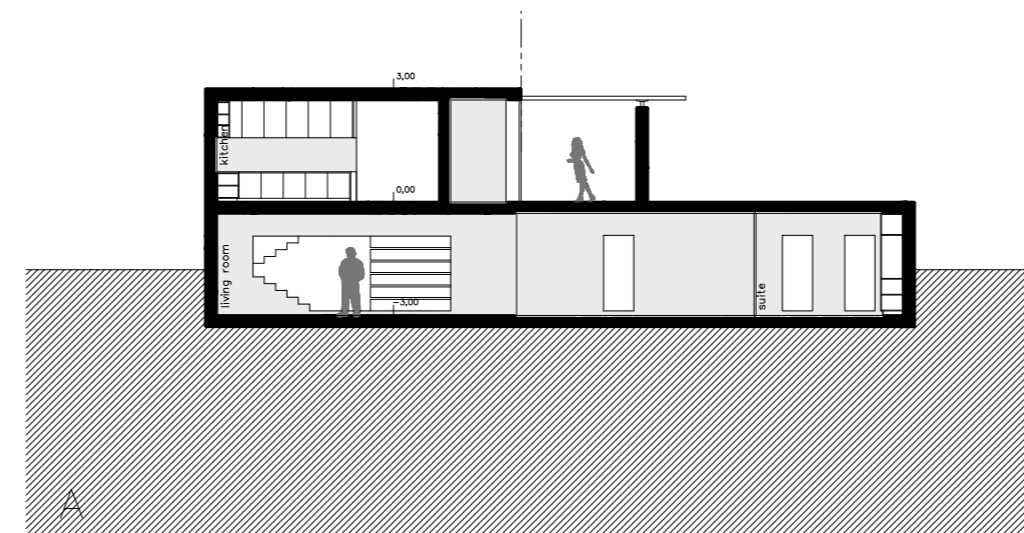
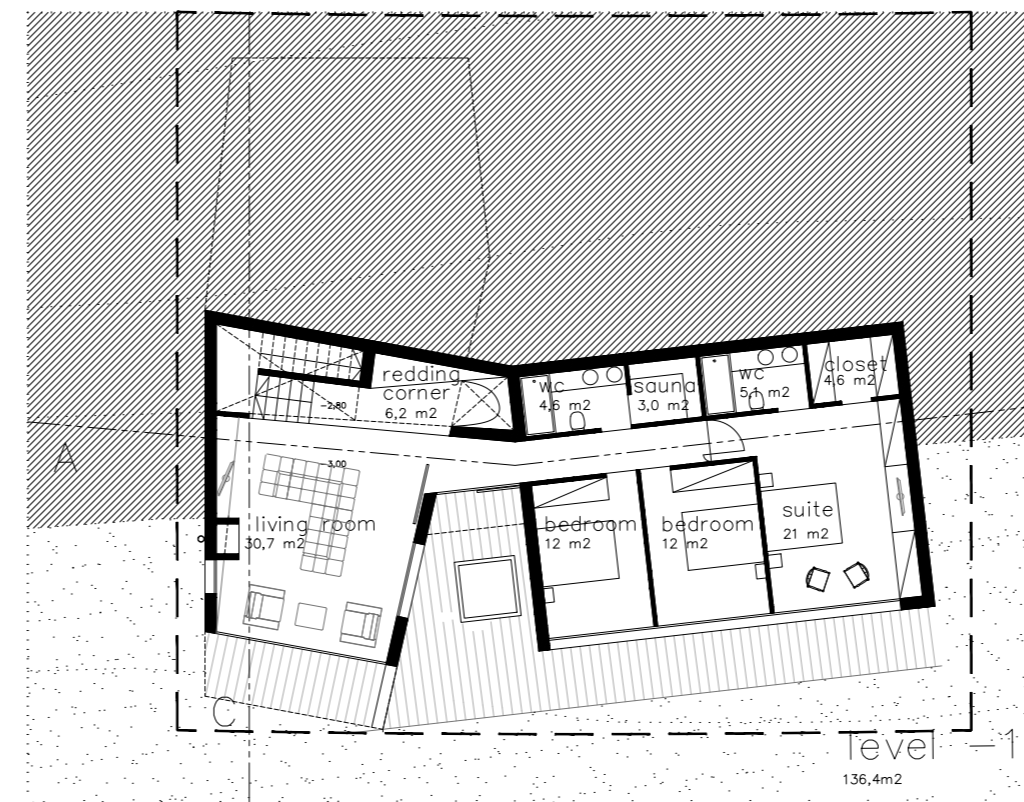
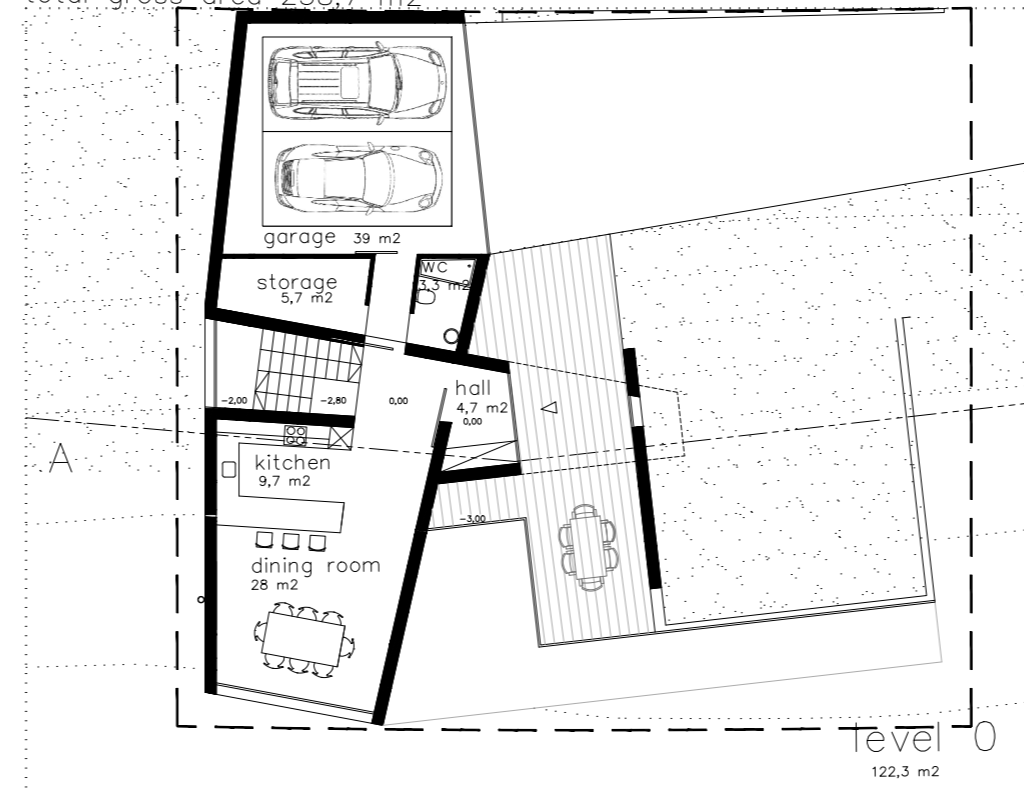


TYPE "B"

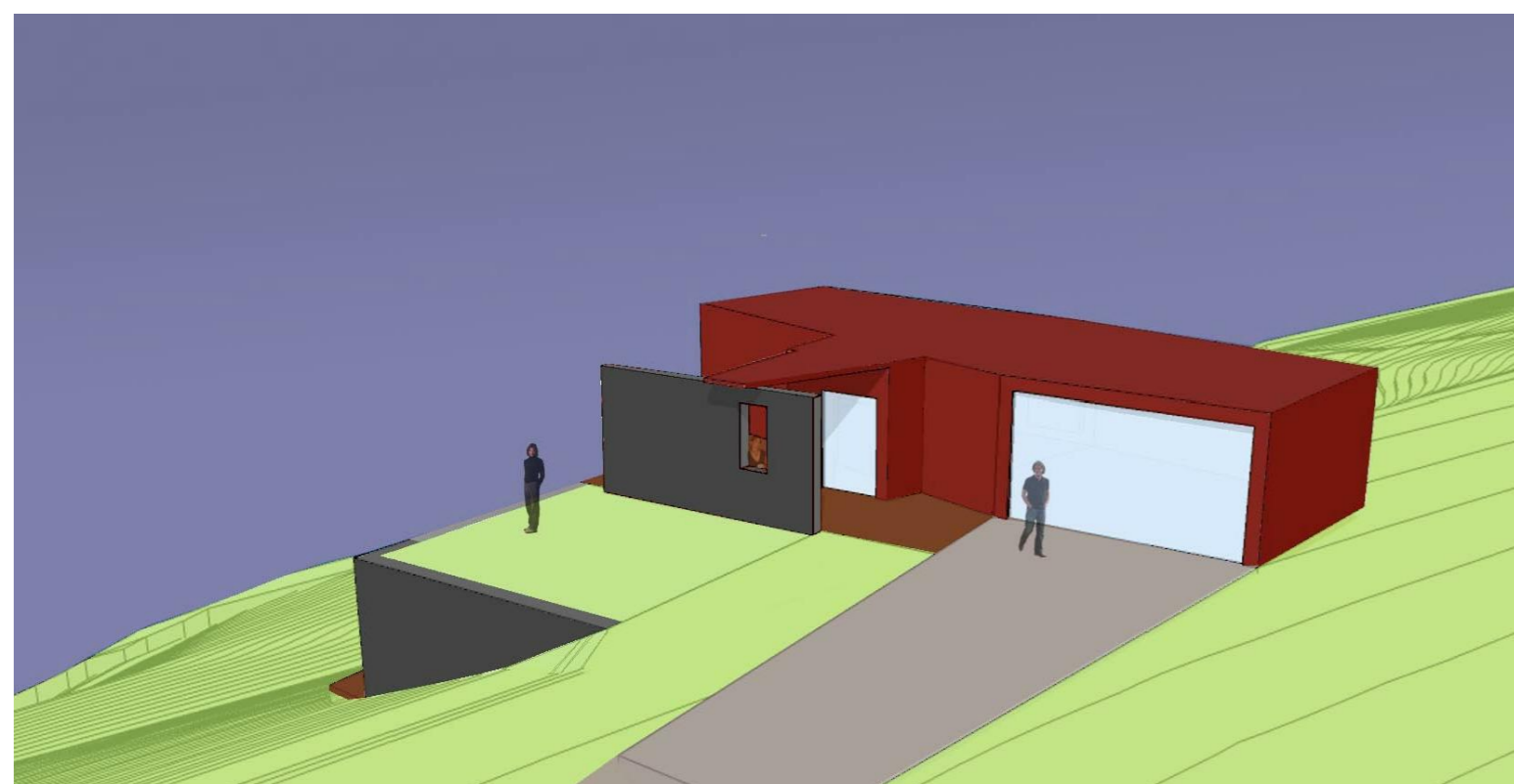
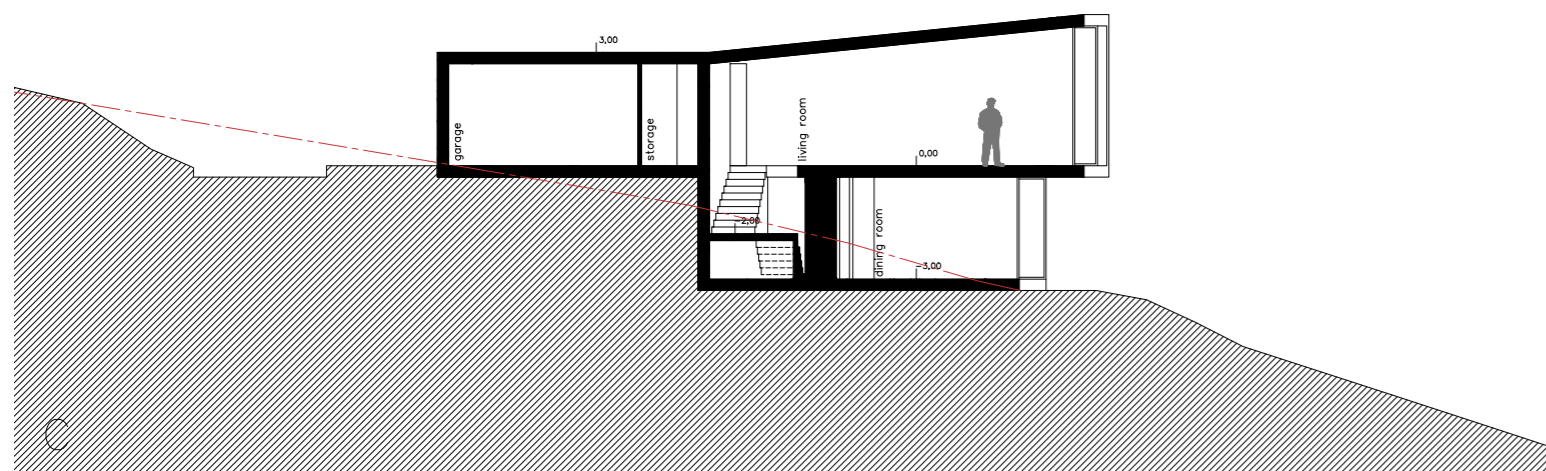
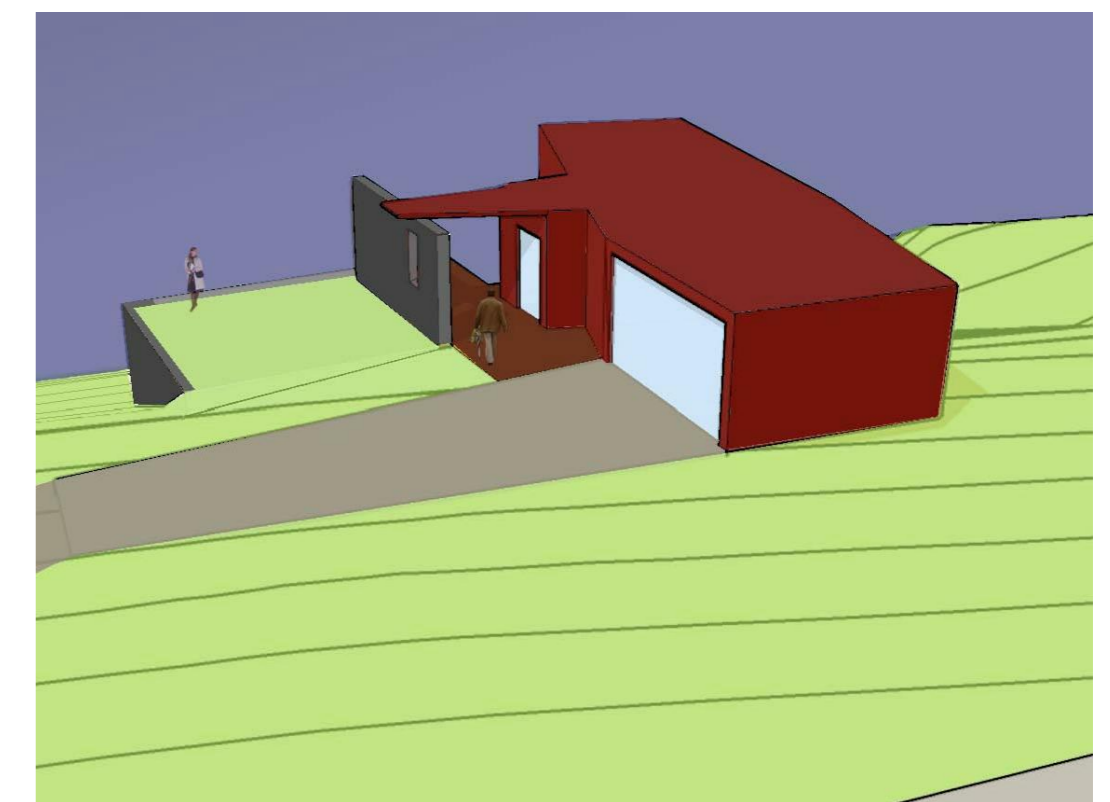
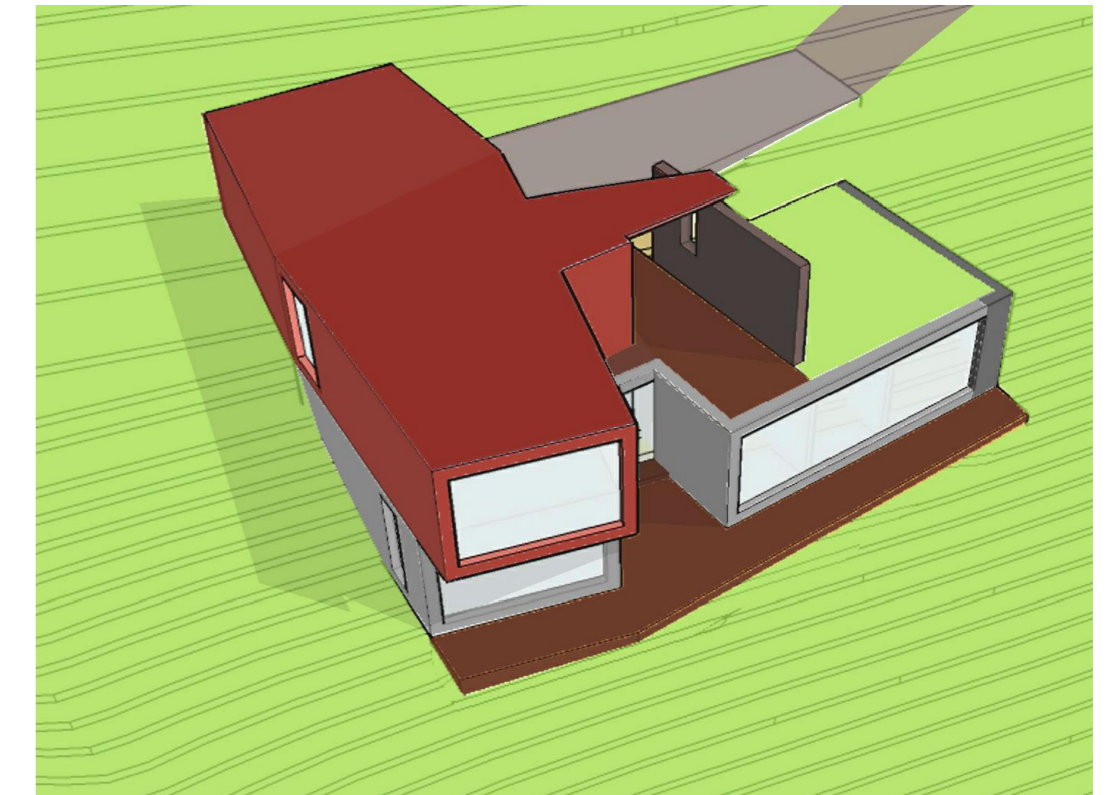
total gross area 258,7 m²



LIGHT AND MULTIPLE VIEWS



PROTECTED OUTDOOR AREAS - SPACE BETWEEN VOLUMES



skýringar & verkferri:

Tillaga að deiliskipulagi í landi Sólbergs

GRUNNTEIKNING
"Type B"

mkv. teiknað dags. 1:200 IÖG 18.04.2008

verkkaup: Norðurbyggingar ehf.

verkefni: Sjávarhverfi

teikning: nr. SÓ-S-004

Eigandi höfundarvitar: NEXUS arkitektar. Teikningu lössað með ekkri skilna milli rekstrar lössi, og þessu efni hefur á sérhlæði leyfi höfundar.

Thorvaldsenstræti 6
101 Reykjavík
Sími. 5511-065
nexus@2be.is

Ívar Örn Guðmundsson
arkitekt fal kt. 130865 3489

